



cm Navigo **MES**

# MANUFACTURING EXECUTION SYSTEM

Critical Manufacturing MES unifies the global enterprise: it improves decision-making, increases efficiency and, ultimately, helps manufacturers to compete.

EMPOWERING OPERATIONS



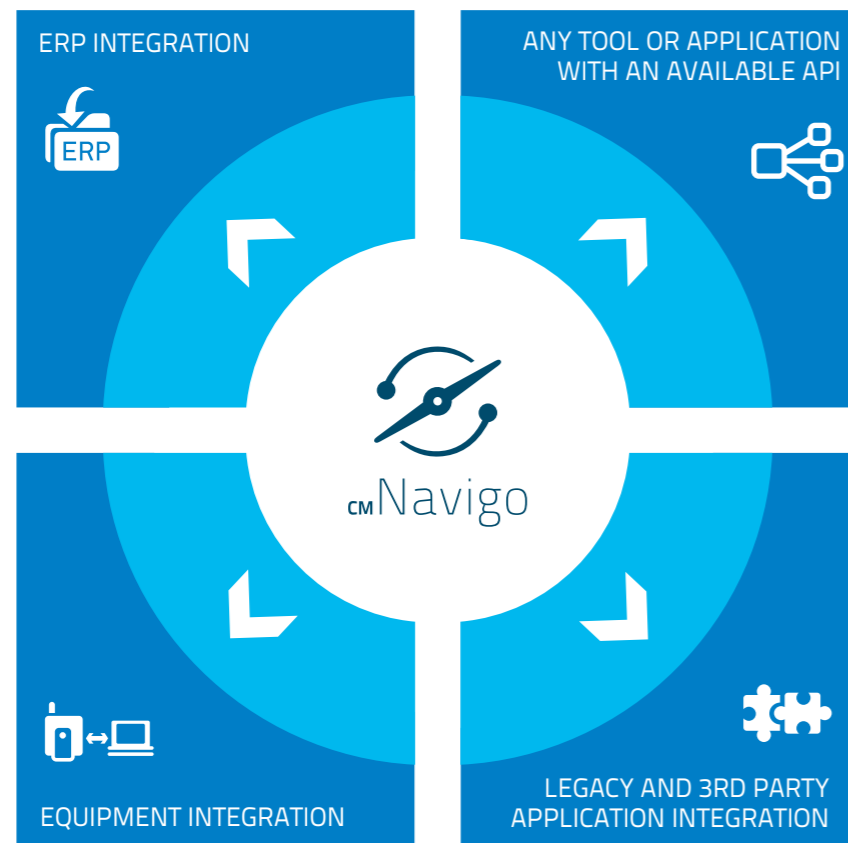
# MANUFACTURING EXECUTION SYSTEM

## Why MES?

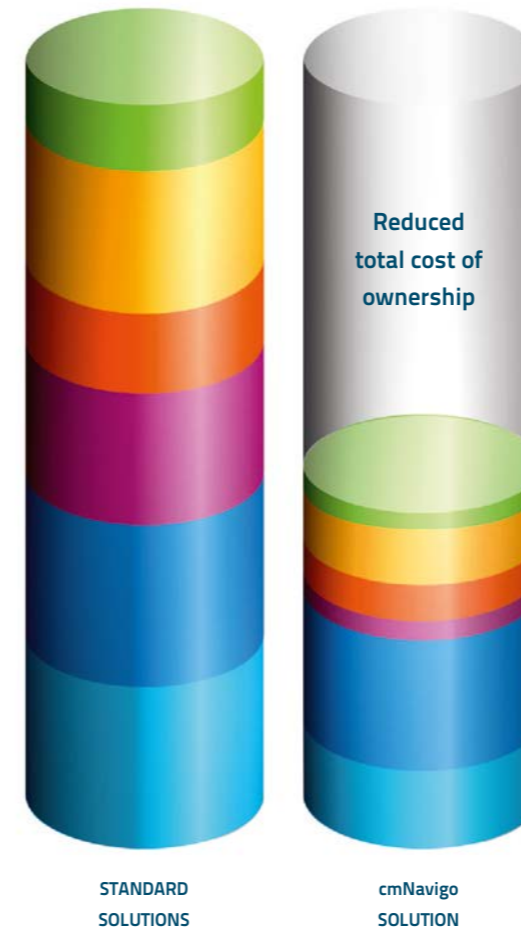
Implementing a manufacturing execution and intelligence system provides users with a single, integrated view of enterprise data, improving decision-making around critical business and production processes. Coordinating enterprise systems like ERP, quality, and R&D with an MES enables manufacturers to reduce risk, simplify and automate processes and support continuous improvement.

## Why Critical Manufacturing?

CRITICAL Manufacturing provides manufacturers of complex, high tech discrete products, a manufacturing execution and intelligence system that empowers the organization to achieve its goals. It scales to mirror growing operational needs, drives visibility of production and costs across the supply chain, and is easy to implement on an existing infrastructure. As a result, our state-of-the-art products and services enable our customers to drive down cost, flexibly meet market demands, and ultimately achieve greater agility, visibility and reliability.



Low Total Cost of Ownership  
Through reduction of all cost factors



### ADMINISTRATION

Single IT stack, with powerful admin tools  
Application admin through a unified GUI

### MODELING

Rich, pre-customized object model  
Modeling through the same GUI  
Empowered end-users

### INSTALLATION

Server side full installer ready in minutes  
No client installation

### 3RD PARTY LICENSES

100% Microsoft Technology  
No hidden costs

### SOFTWARE

Scalable pricing model, based on size  
Modular functionality

### HARDWARE

Scalable HW based on needs  
From single server to full fault-tolerant, high-available configuration

FROST & SULLIVAN

Critical Manufacturing is proud of its designation by Frost & Sullivan as a global value leader in the MES industry leader for its low total cost of ownership, features and ease of use.

Global Price Performance  
Value Leadership Award Report

**ENSURE A MODULAR, YET FULLY INTEGRATED MANAGEMENT OF SHOP-FLOOR RESOURCES**

**ADVANCED MODULES FOR GRAPHICAL ONLINE VISIBILITY AND FULL DATA TRACEABILITY**

**OPTIMIZATION AND EFFICIENCY INCREASE SHOP-FLOOR MODULES**



**MATERIALS & CONTAINERS**  
Bill of materials and container models for flexible, highly-granular traceability.



**RESOURCE AND DURABLES TRACKING**  
Resource and durables Management. Integration with Recipe Management, Maintenance, Exceptions and Data Collection.



**DATA COLLECTION**  
Flexible, scalable and automated data collection that is fully integrated with Statistical Process Control and Exceptions Management.



**ORDER MANAGEMENT**  
Provides the means to manage the fulfillment of production orders from a shop-floor perspective.



**WAREHOUSE MANAGEMENT**  
Manage request and return of materials between Shop-floor and Warehouse.



**SHIFT MANAGEMENT**  
Management and balancing of users, teams and shifts.



**FABLIVE**  
Fab layout tool with overview and zoom-in capabilities for historical and real-time trending and analytical reports.



**DASHBOARDS**  
Graphically access material, resource or other user defined query to chart and report on process data enabling users to fulfill custom business requirements.



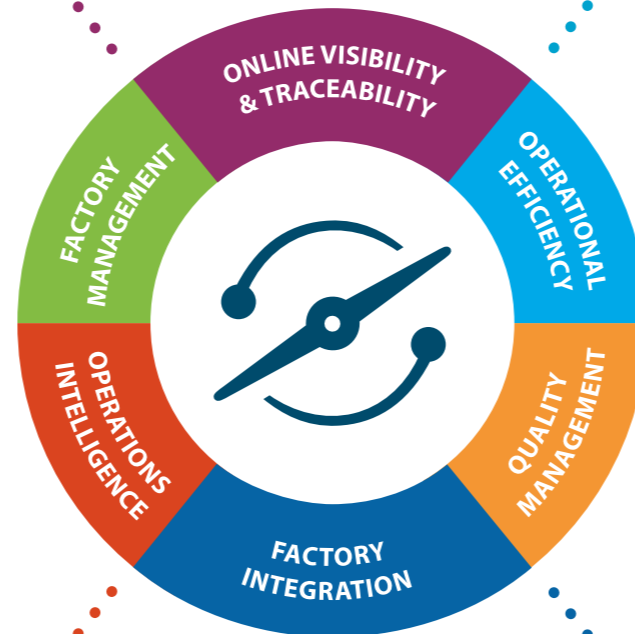
**MATERIAL GENEALOGY**  
Easily access the full or filtered history information of any object with a full list of descendants or ascendants of any material.



**ADVANCED LAYOUT & PRINTING**  
Design, preview and print labels and lot travelers with context driven information for text, images or barcodes.



**MOBILE**  
Visualize in real time fab layouts, dashboards and other information from mobile devices



**ADVANCED REPORTS**  
Create, edit and publish highly-granular reports based on the online database, the operational data store or other external database.



**OPERATIONAL DATA STORE**  
Fast and feature-rich data extraction and archiving tool for integration with external heterogeneous data sources.



**DATA ANALYSIS**  
Intelligent, automated multi-source data extraction and analysis capabilities.



**OLAP OPERATIONS**  
Multi-dimensional data warehouse, with advanced slicing and dicing OLAP operations.



**DATA MINING**  
Advanced data mining algorithms and analysis, including time series, decision trees and neural networks.



**ERP INTEGRATION**  
Flexible ERP integration (SAP, MS, etc.) for production orders, inventory status updates, master data and maintenance operation data with Synchronous or Asynchronous communication in the event of ERP downtime.



**FOUNDATION**  
Integration and productivity platform with presentation meta-data based business and analytics layers.



**CONNECT**  
Full point-and-click equipment integration platform connecting enterprise software (SECS/GEM, OPC, PLC, File, Database, LIMS) with Navigo or other MES, including service and message mapping.

**SCHEDULING**  
Integrated scheduling optimization & execution.



**ROUTING AND DISPATCHING**  
Service-oriented, hierarchical resource and material dispatching with customizable rework paths.



**MAINTENANCE MANAGEMENT**  
Ad-hoc time and usage based maintenance management integrated with Material and Resource management, bill of parts and checklists.



**RECIPE MANAGEMENT**  
Recipe parameters and context resolution integrated with resource and material tracking and equipment integration.



**COSTING**  
Real-time shop-floor costing control through cost absorption (labor, equipment, materials, etc.)



**SHIFT LOGBOOK**  
Exchange of critical information between shifts.



**STATISTICAL PROCESS CONTROL**  
Variable and attribute charts, integrated with data collection, exceptions, resource and material tracking. Western Electric and user defined rules.



**EXCEPTIONS MANAGEMENT**  
Manual or automatic user defined exception protocols linked to EDC limits and SPC rules and linked to process checklists.



**CHECKLISTS**  
Mandatory or optional, sequential or floating multi-step checklists with defined parameters and tracking integrated with manual or automatic rules.



**DOCUMENT MANAGEMENT**  
Visualize, control and approve shop-floor related documents within MES context and at the right operation.

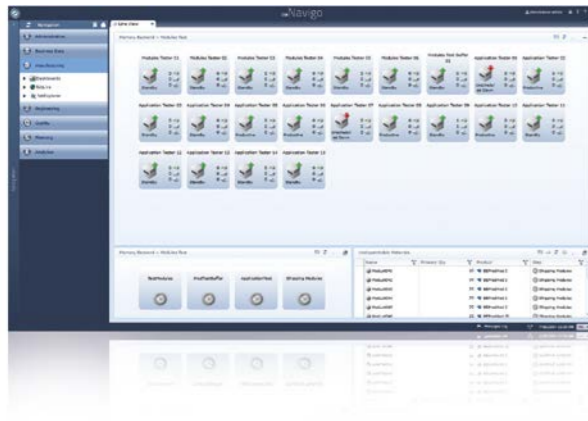


**SAMPLING**  
Define and execute time and counter based sampling based on flexible contexts.

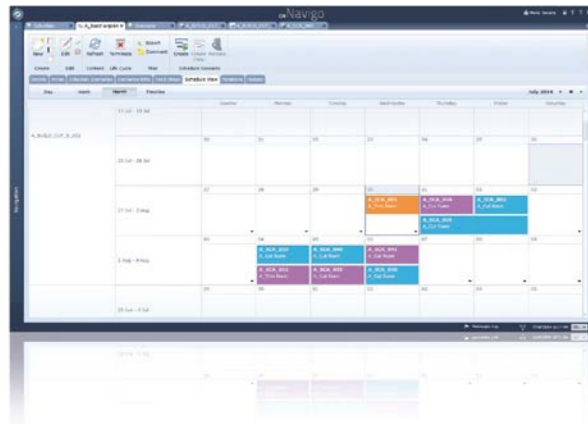


Empowered end-users  
Next generation user experience

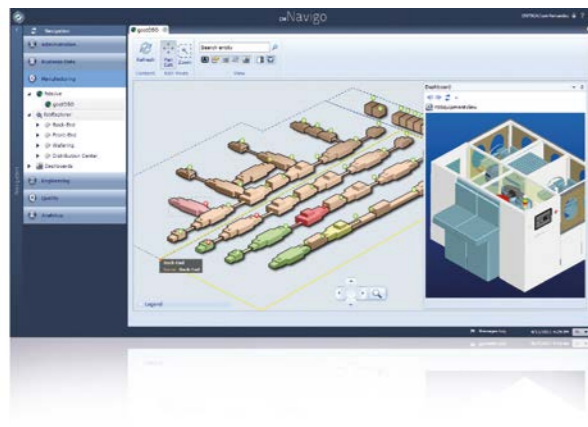
**FACTORY MANAGEMENT**



**OPERATIONAL EFFICIENCY**



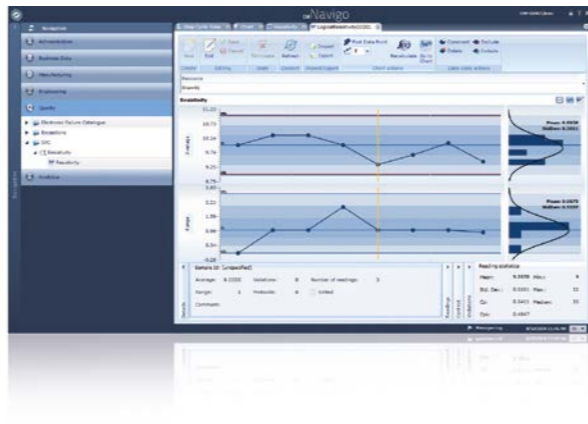
**FACTORY INTEGRATION**



**ONLINE VISIBILITY & TRACEABILITY**



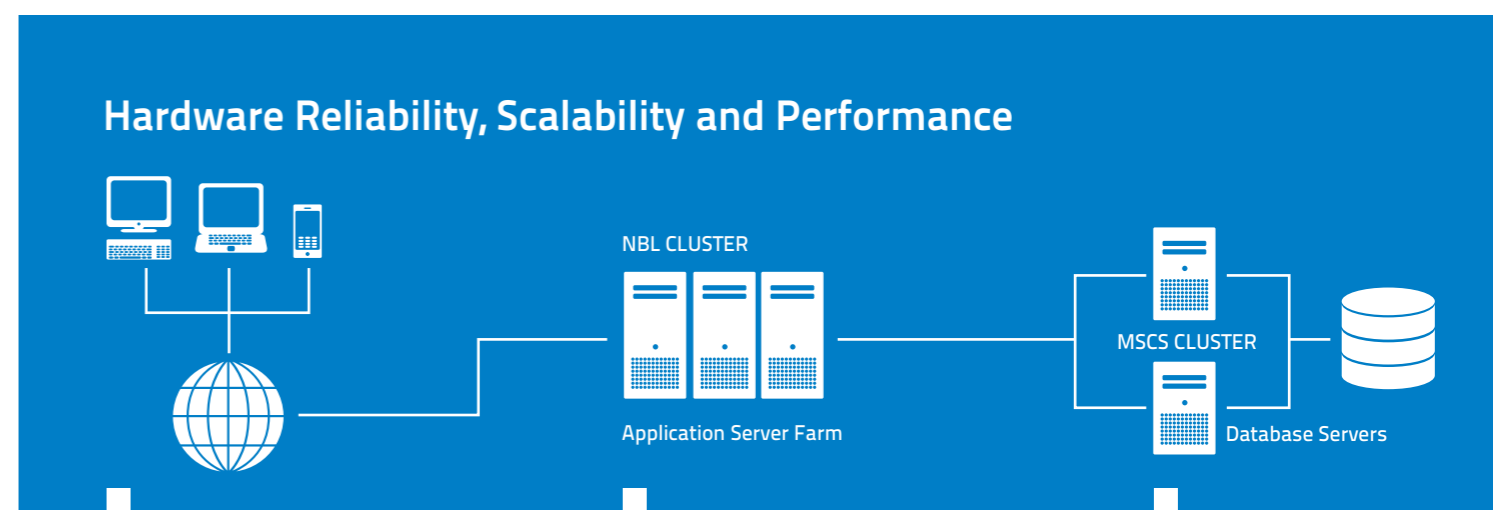
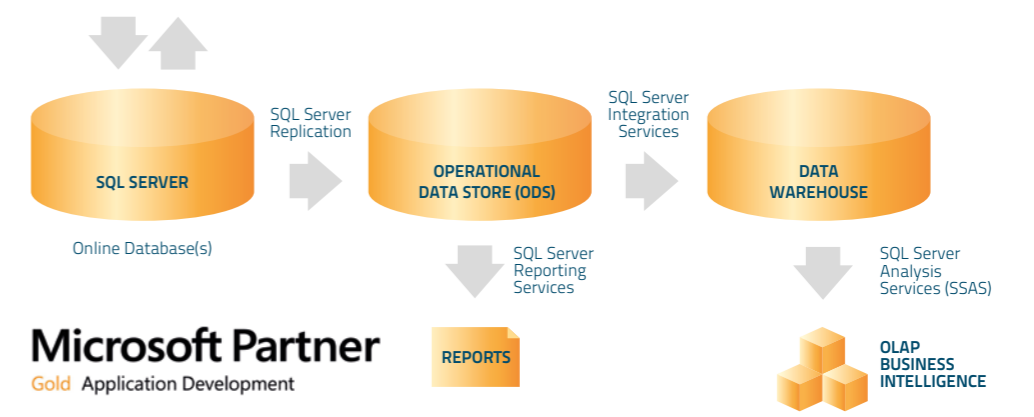
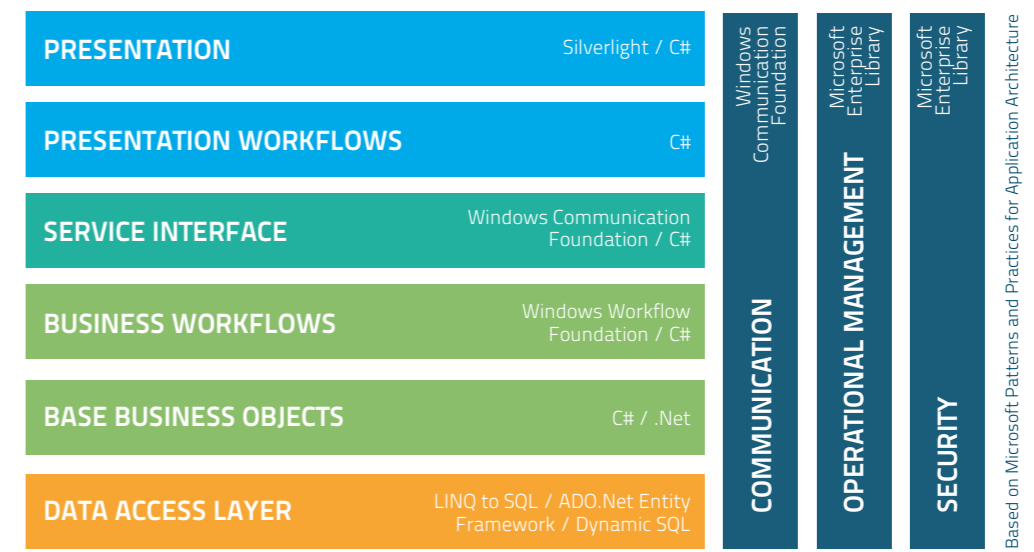
**QUALITY MANAGEMENT**



**OPERATIONS INTELLIGENCE**



Fully integrated modular system  
Flexible, scalable and extensible to all tiers



Extensibility  
At all tiers

- PRESENTATION TIER**
  - Add ribbon actions
  - Create addins
  - New gui's
- BUSINESS TIER**
  - Dynamic business rules
  - Custom entities
  - Custom services
- ANALYTICS TIER**
  - Reports
  - Cubes
  - Data sources

Manufacturing & R&D  
America, Europe and Asia

[www.criticalmanufacturing.com](http://www.criticalmanufacturing.com)  
[contact@criticalmanufacturing.com](mailto:contact@criticalmanufacturing.com)



### Critical Group

Provides business critical solutions across industries such as aerospace, defense and telecommunications, under stringent quality certifications like NATO and CMMI Level 5

### Experience

Our engineers provide solutions for some of the most challenging MES green-field and migration projects world-wide. Their experience is at your service

### Innovation

Our solutions address the most important industry challenges through cutting-edge innovative products and technologies

### Reference Customers

- Semiconductors
- Solar
- Electronics
- Medical Devices
- Other industries